



57 South Commerce Way #130, Bethlehem PA 18017
(610) 443-2282

Customer: _____

Address: _____

Phone: _____

Contact: _____

Project Name: _____

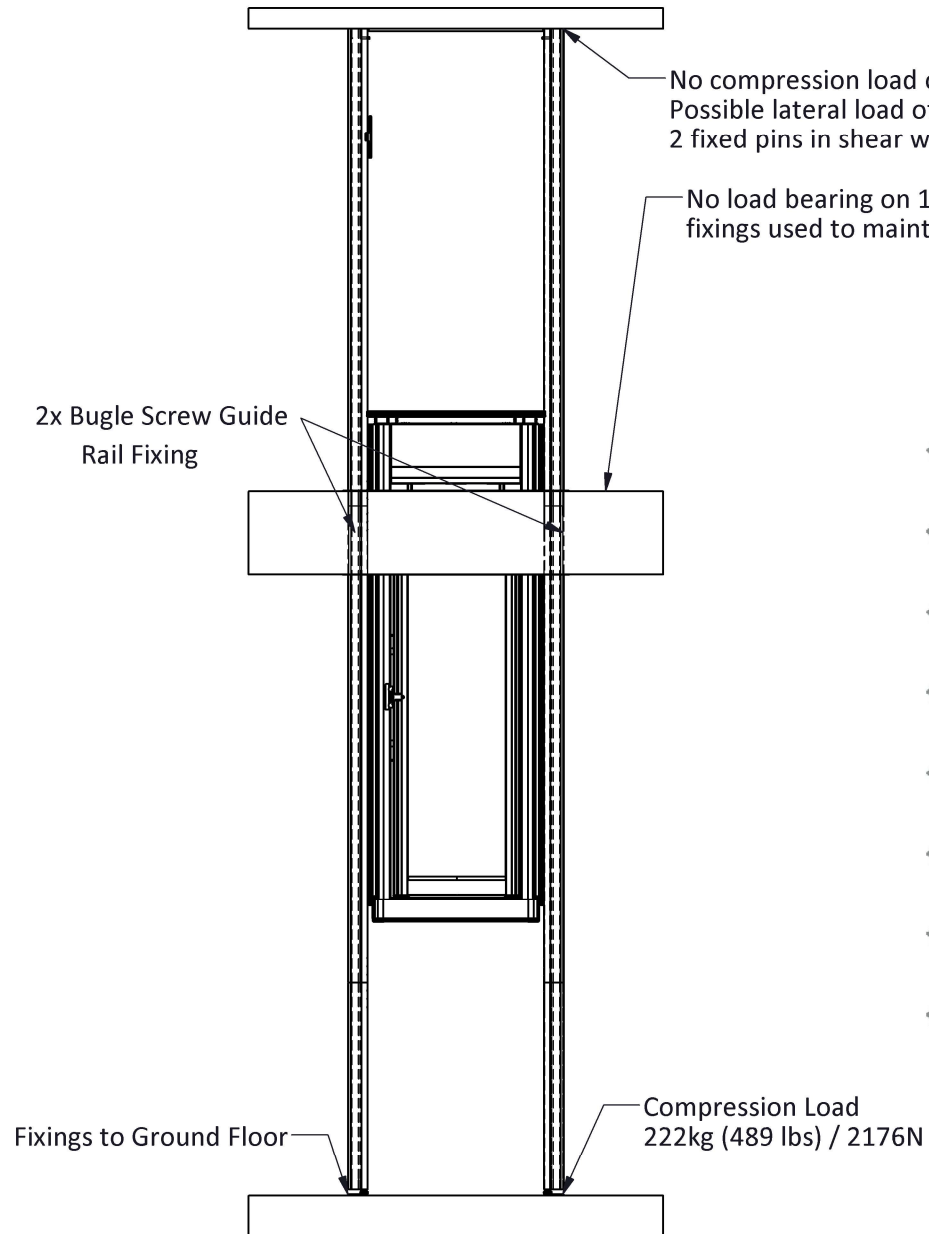
Location: _____



The information contained herein is the exclusive property of Stiltz Ltd. and shall not be distributed, reproduced, or disclosed in whole or in part without prior written permission of Stiltz Ltd.



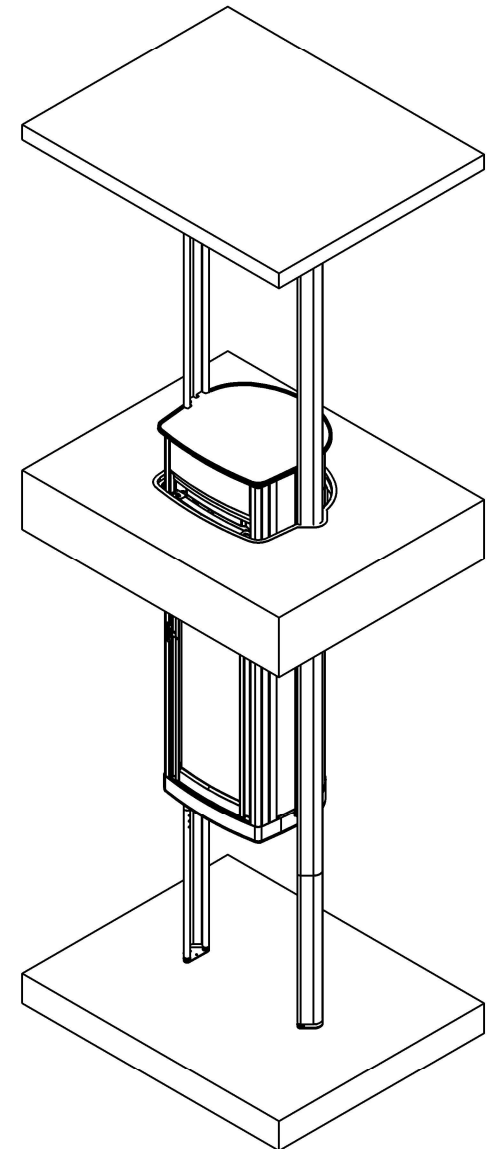
©		TITLE	
Drawn	Wagon Wang	Date	2018/07/02
		DIMENSIONS IN MM UNLESS OTHERWISE NOTED	
THIRD ANGLE PROJECTION - AS 1100		A4	Dwg No CUSTOMER. 01
		SCALE:	PAGE 1 OF 17



Technical Information


Duo Alta

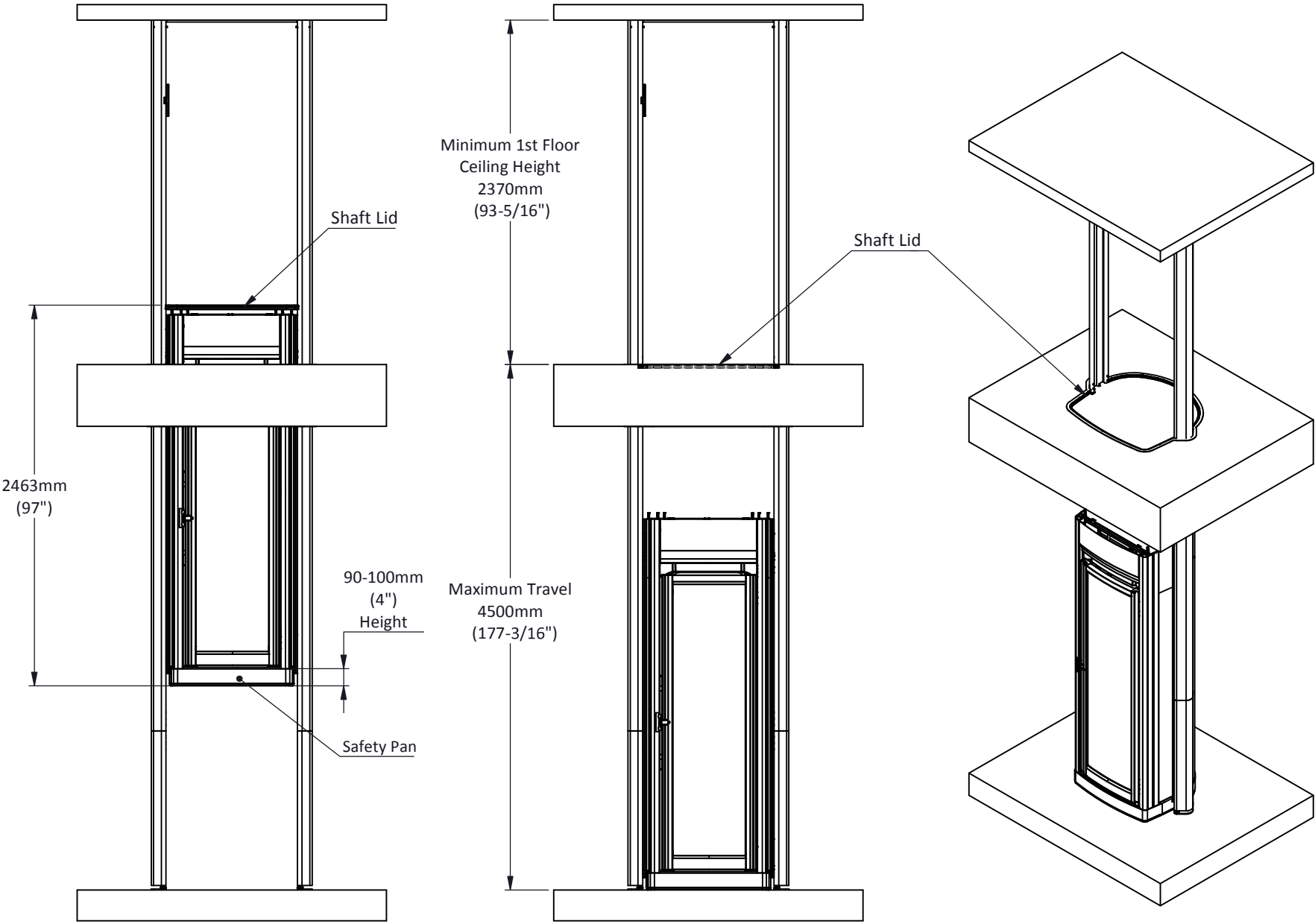
- DRIVE SYSTEM:
Roped Drum, Braked Gear Motor Drive
- CAPACITY:
MAX Capacity 170kg (375 Lbs) / 2persons
- TRAVEL:
Up to 4500mm (177-3/16")
- NO of FLOORS:
2 Maximum
- SUPPLY VOLTAGE:
240v 1PH 50HZ/60HZ
- RUNNING CURRENT:
4-6 AMP
- STARTING CURRENT:
5-8 AMP
- STANDARD COLOUR:
Agate Grey (RAL 7038)



The information contained herein is the exclusive property of Stiltz Ltd. and shall not be distributed, reproduced, or disclosed in whole or in part without prior written permission of Stiltz Ltd.




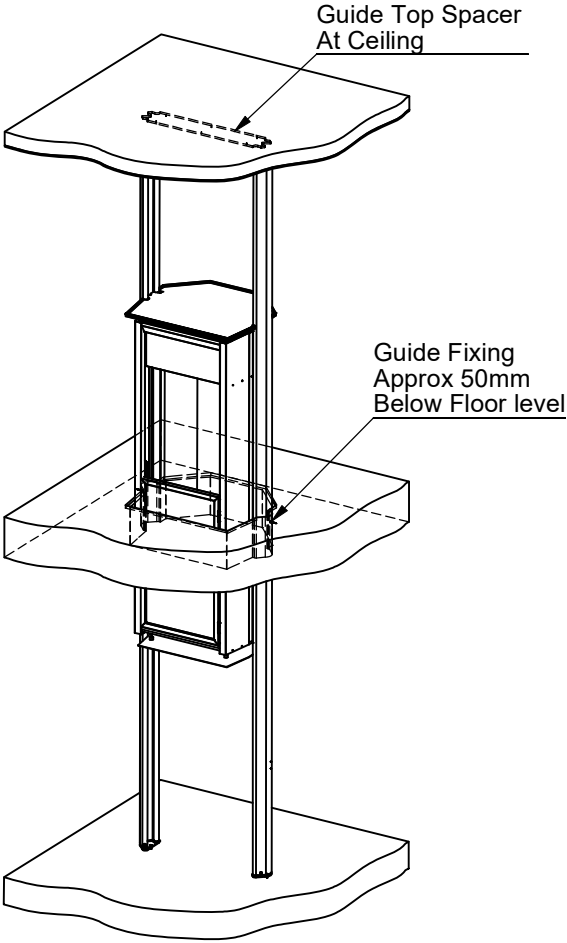
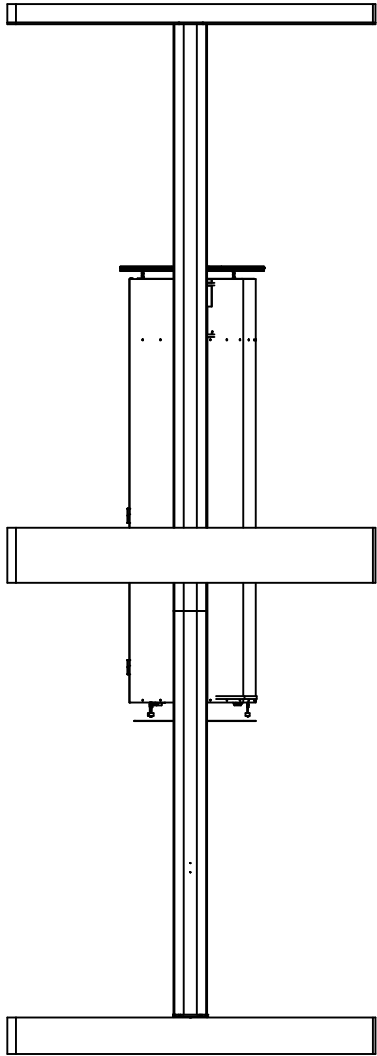
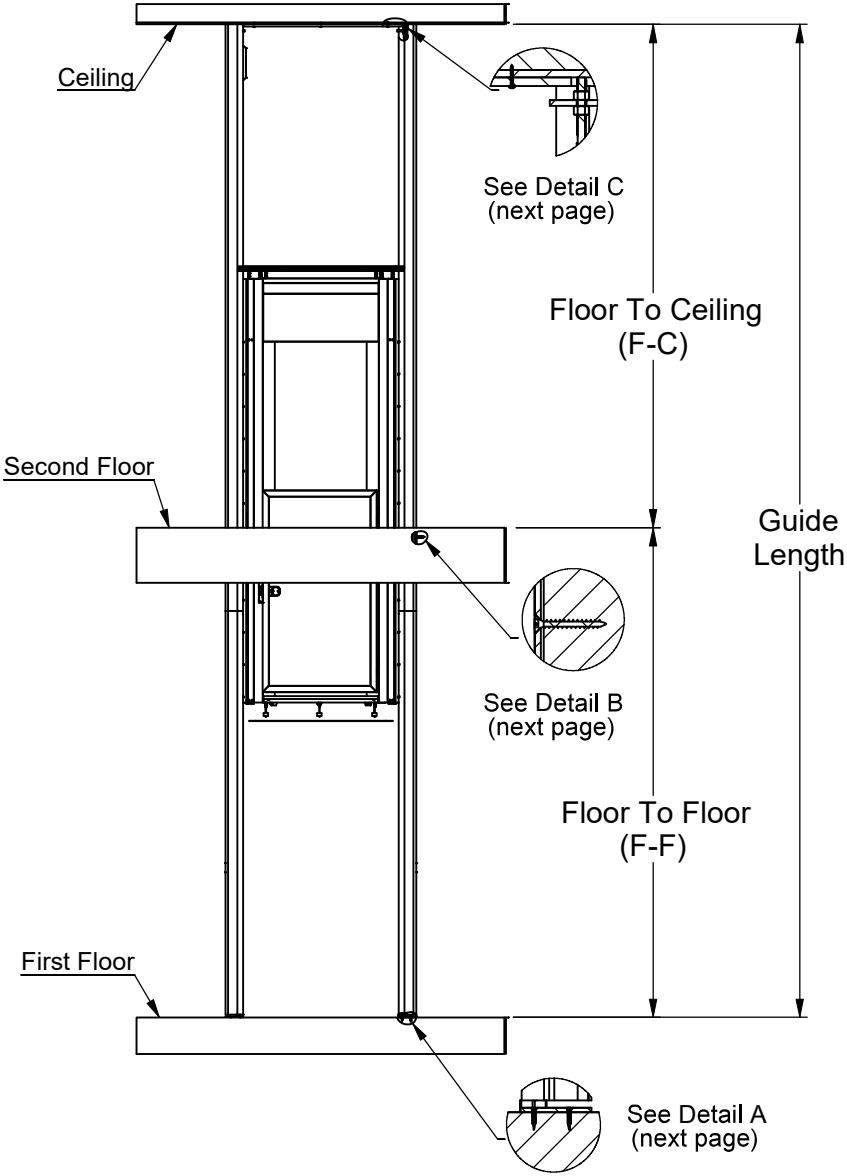
©			TITLE		
Drawn Wagon Wang		Date 2018/07/02	LD Duo Lift Specification		
<div><div>DIMENSIONS IN MM UNLESS OTHERWISE NOTED</div><div>THIRD ANGLE PROJECTION - AS 1100</div></div>			A4	Dwg No CUSTOMER. 02	PAGE
				SCALE:	2 OF 17



The information contained herein is the exclusive property of Stiltz Ltd. and shall not be distributed, reproduced, or disclosed in whole or in part without prior written permission of Stiltz Ltd.



©		TITLE	
LD Duo Lift Travel			
Drawn	Wagon Wang	Date	2018/07/02
		DIMENSIONS IN MM UNLESS OTHERWISE NOTED	
THIRD ANGLE PROJECTION - AS 1100			
A4	Dwg No	CUSTOMER. 03	PAGE
	SCALE:		3 OF 17

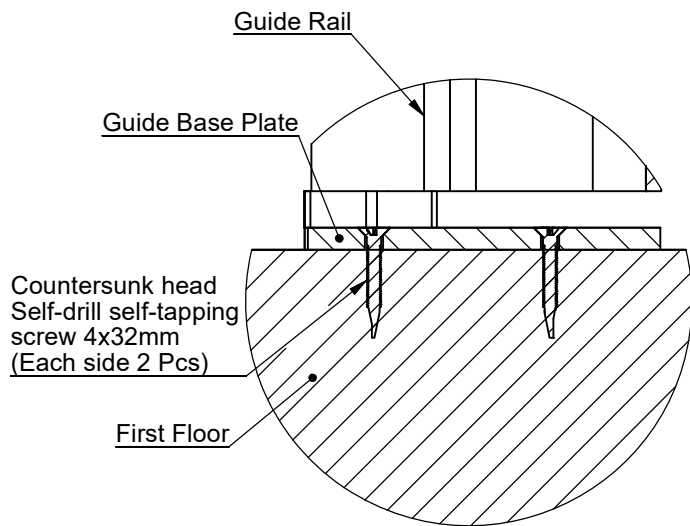


The information contained herein is the exclusive property of Stiltz Ltd. and shall not be distributed, reproduced, or disclosed in whole or in part without prior written permission of Stiltz Ltd.

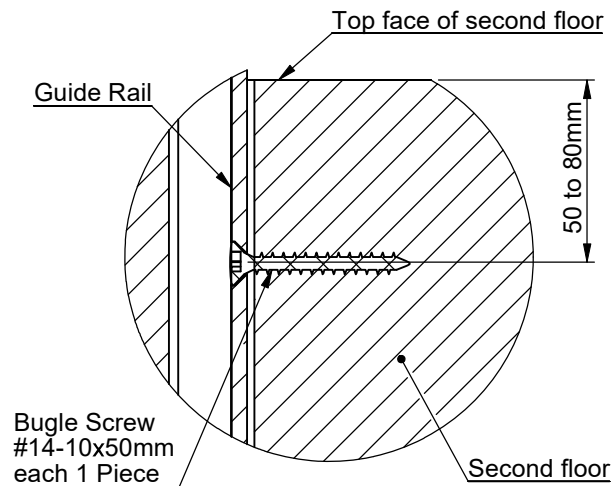


©		TITLE	
Drawn	Wagon Wang	Date	2018/07/02
		LD Duo Lift Fixings Overview	
DIMENSIONS IN MM UNLESS OTHERWISE NOTED		A4	Dwg No CUSTOMER. 04
THIRD ANGLE PROJECTION - AS 1100			SCALE:
		PAGE 4 OF 17	

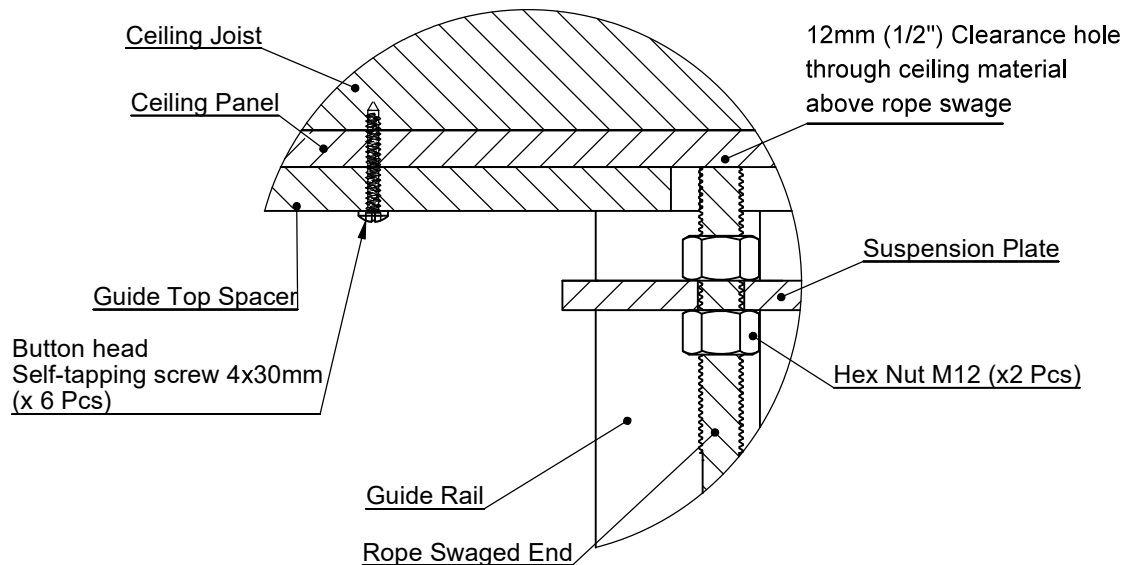
PRINT MAY BE REDUCED - DO NOT SCALE.



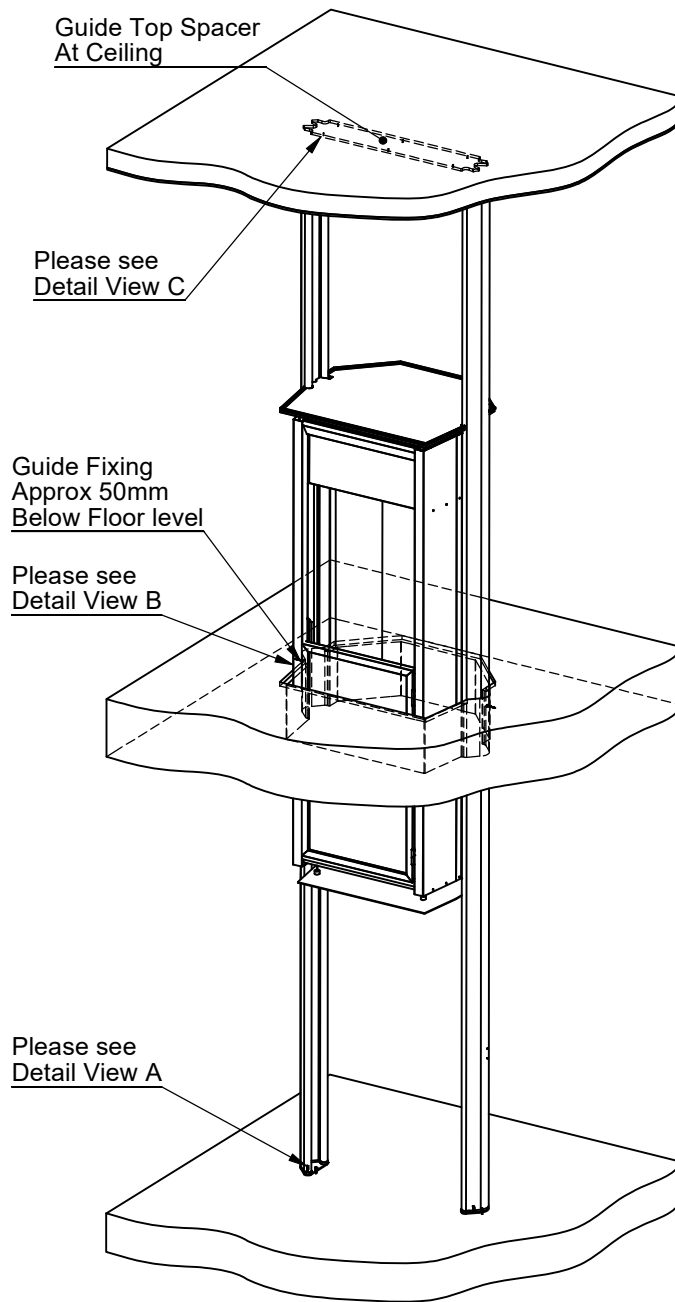
DETAIL A
SCALE 1 : 2



DETAIL B
SCALE 1 : 2



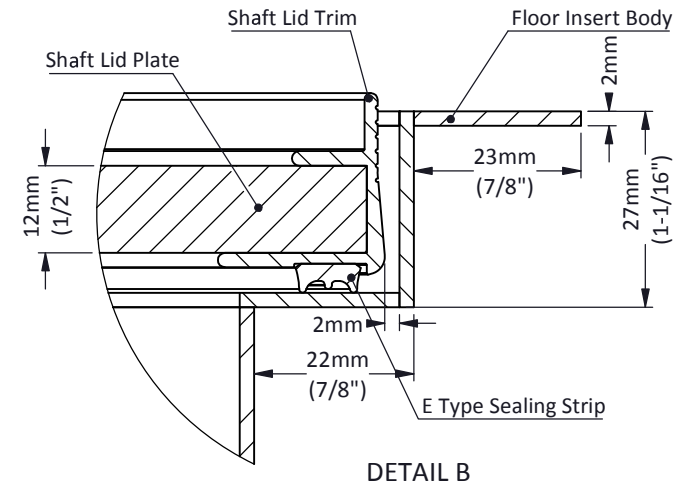
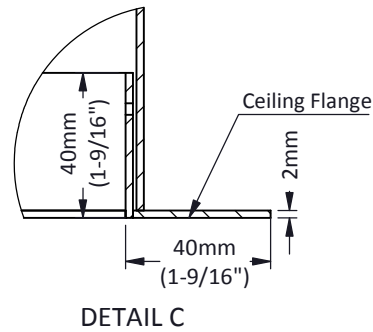
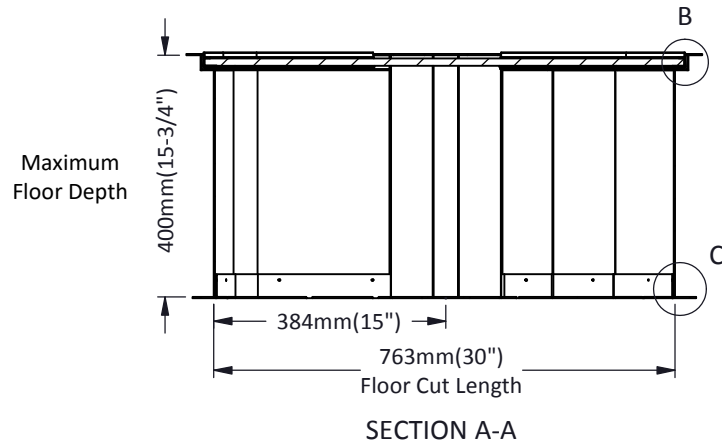
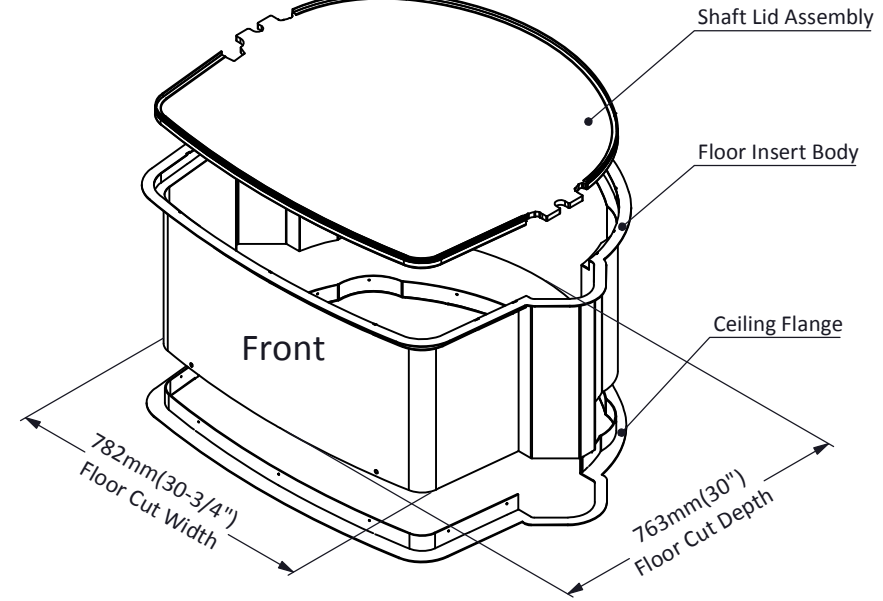
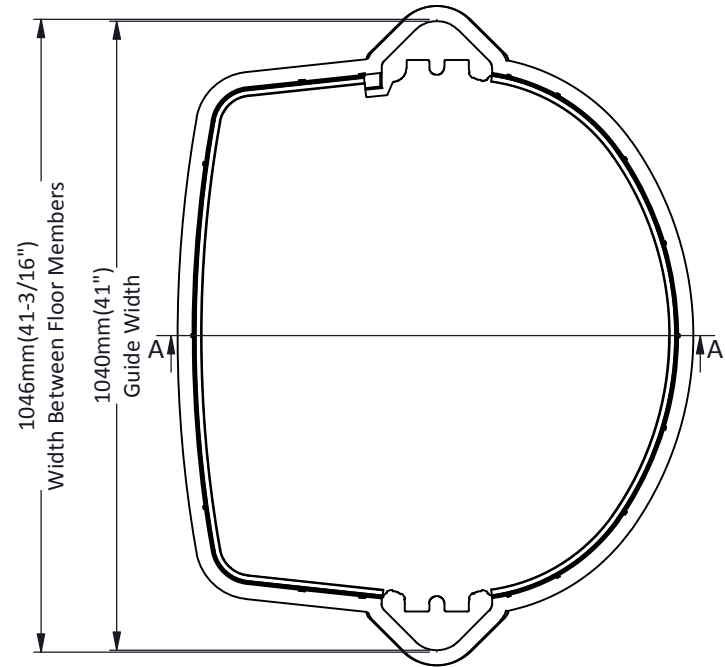
DETAIL C
SCALE 1 : 2



The information contained herein is the exclusive property of Stiltz Ltd. and shall not be distributed, reproduced, or disclosed in whole or in part without prior written permission of Stiltz Ltd.




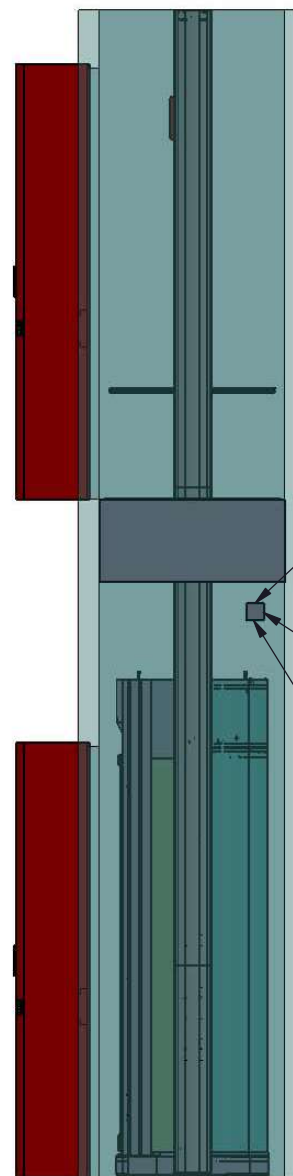
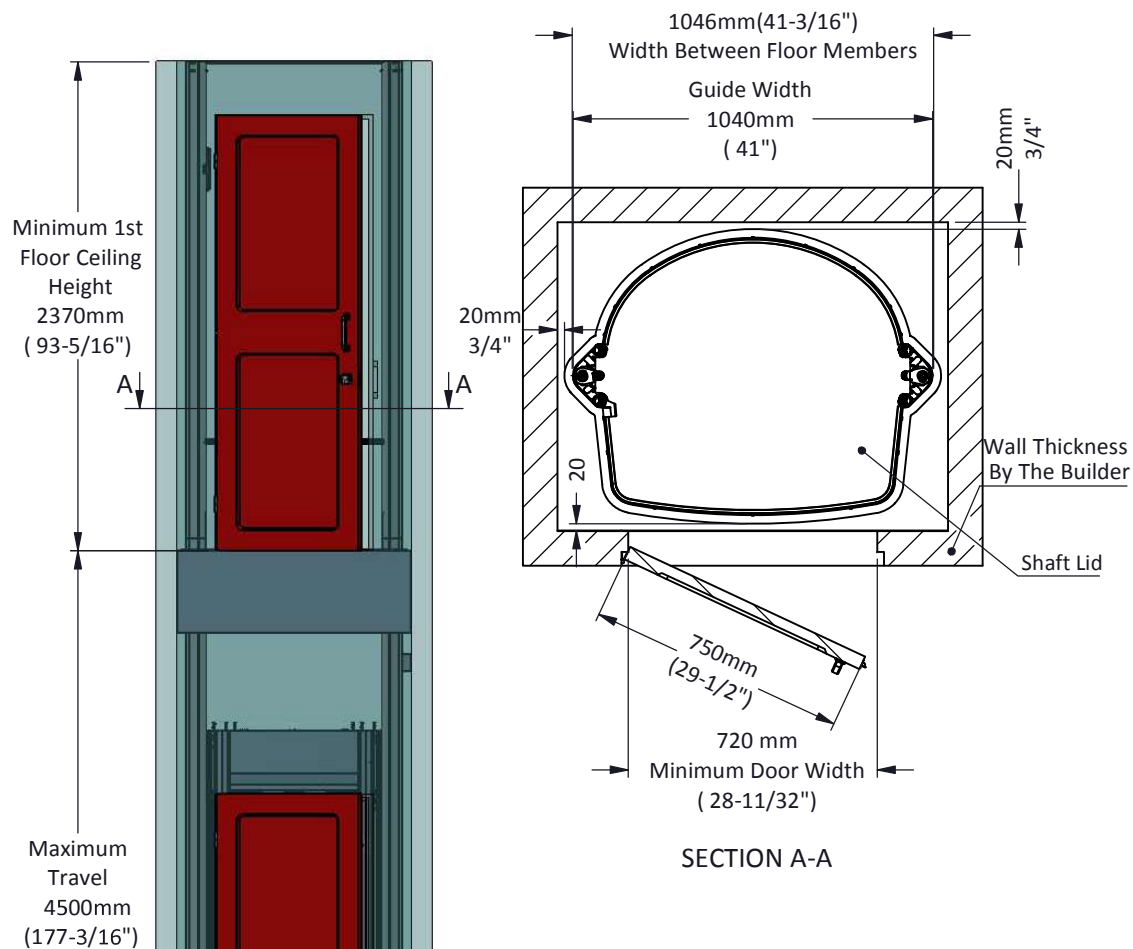
©			TITLE		
Drawn Wagon Wang		Date 2018/07/02	LD Duo Lift Fixings Detail		
<div></div> <div>DIMENSIONS IN MM UNLESS OTHERWISE NOTED</div> <div>THIRD ANGLE PROJECTION - AS 1100</div>			A4	Dwg No CUSTOMER. 05	PAGE 5 OF 17
				SCALE:	



The information contained herein is the exclusive property of Stiltz Ltd. and shall not be distributed, reproduced, or disclosed in whole or in part without prior written permission of Stiltz Ltd.



©			TITLE		
Drawn Wagon Wang		Date 2018/07/02	LD Duo Floor Insert Body & Shaft Lid Assembly		
 THIRD ANGLE PROJECTION - AS 1100			DIMENSIONS IN MM UNLESS OTHERWISE NOTED		
			A4	Dwg No. CUSTOMER.06	PAGE
				SCALE:	6 OF 17

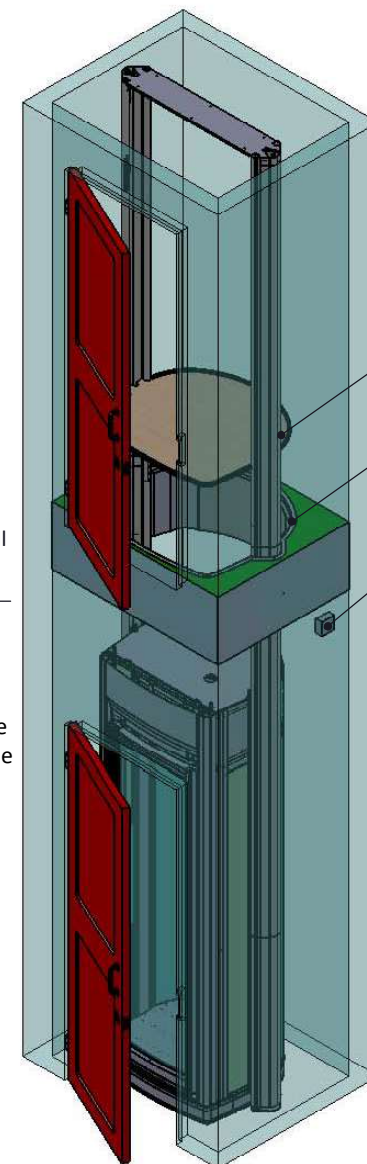


To Ceiling
100mm
(4")

To Inner Wall
100mm
(4")

Power Socket

Land Line Telephone Jack



Shaft Lid Raised to Show Floor Insert

Floor Insert

Power Socket (Supplied From Approved Disconnect)

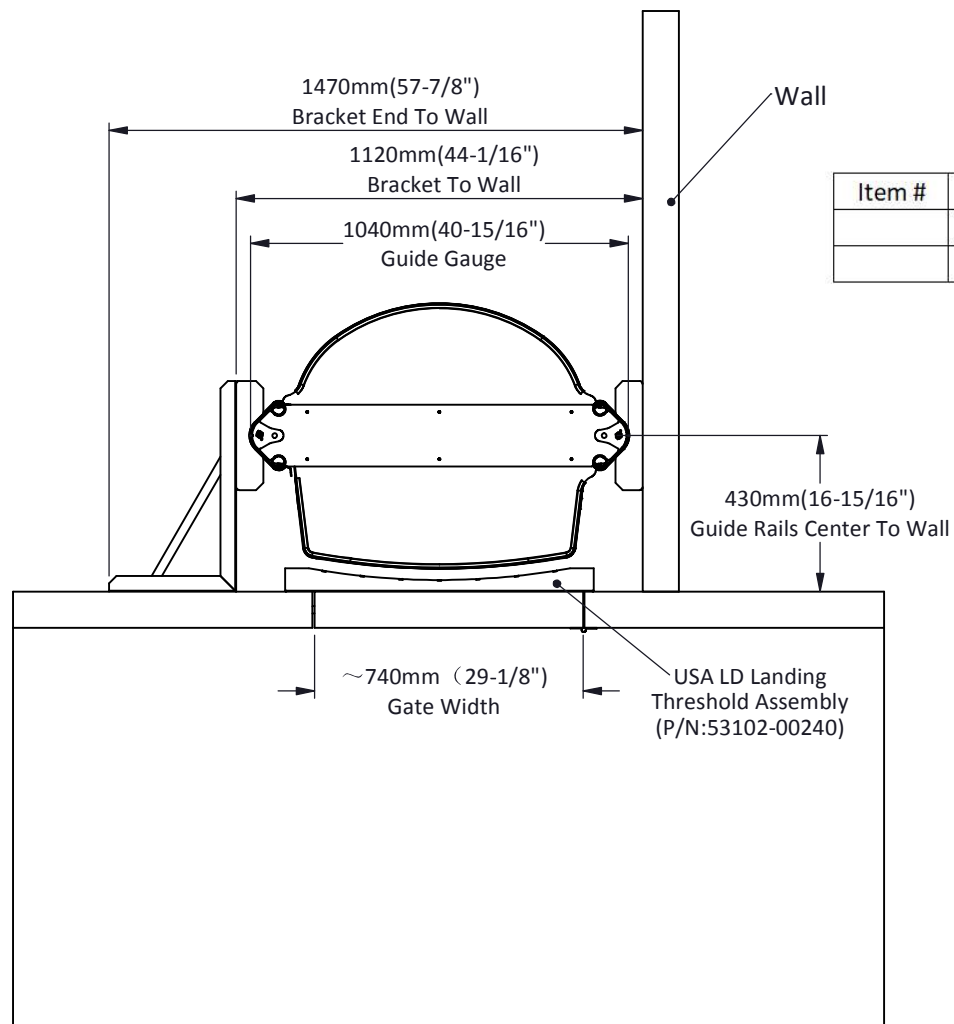
Land Line Telephone Jack



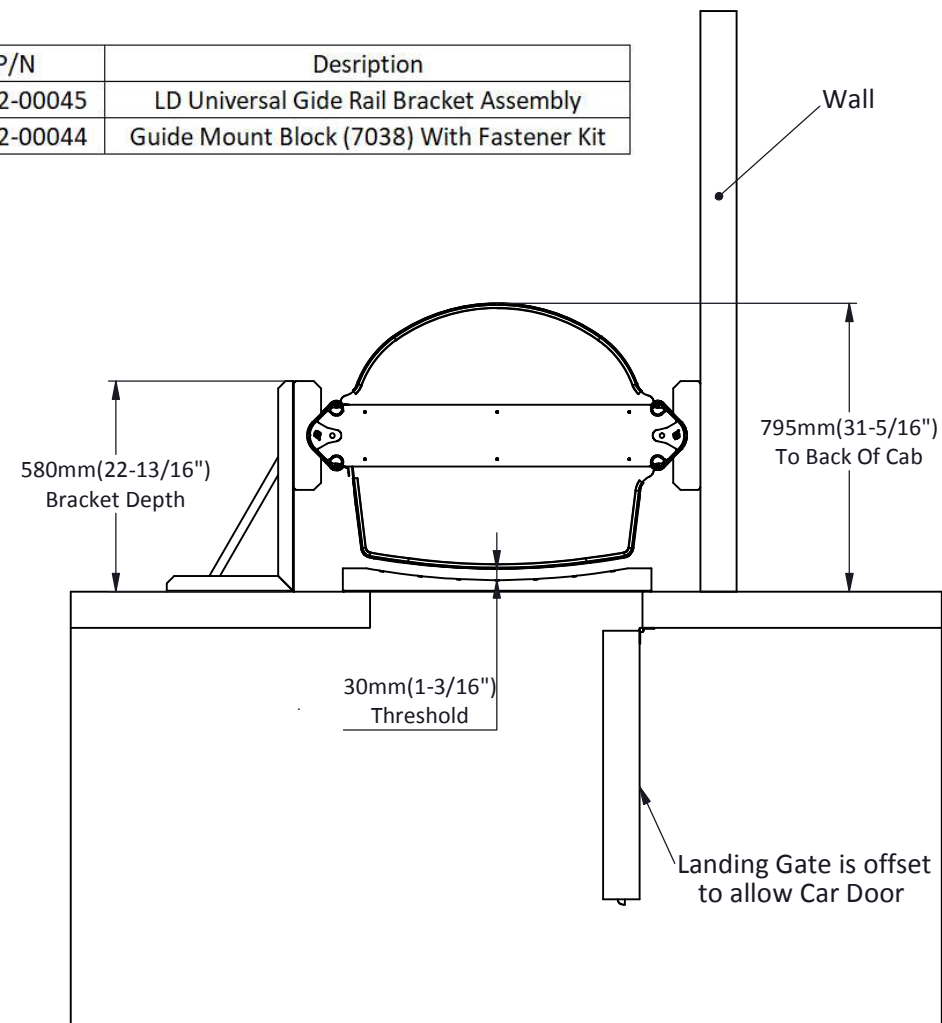
The information contained herein is the exclusive property of Stiltz Ltd. and shall not be distributed, reproduced, or disclosed in whole or in part without prior written permission of Stiltz Ltd.



©		TITLE	
Drawn	Wagon Wang	Date	2018/07/02
THIRD ANGLE PROJECTION - AS 1100		LD Duo Lift Shaft Information	
A4		Dwg No	CUSTOMER. 07
SCALE:		PAGE	
		7 OF 17	

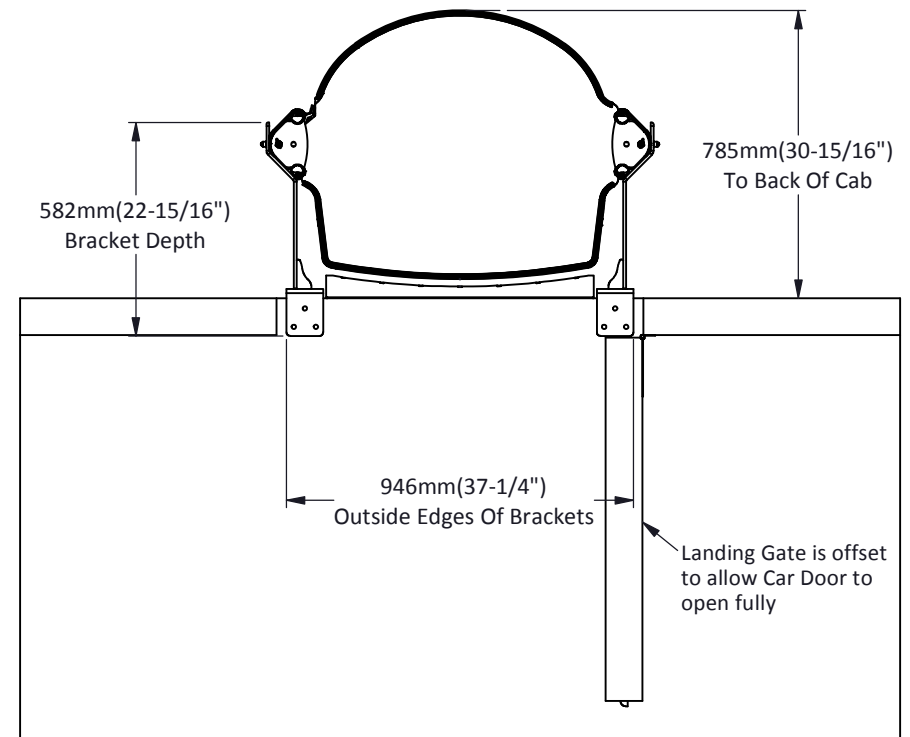
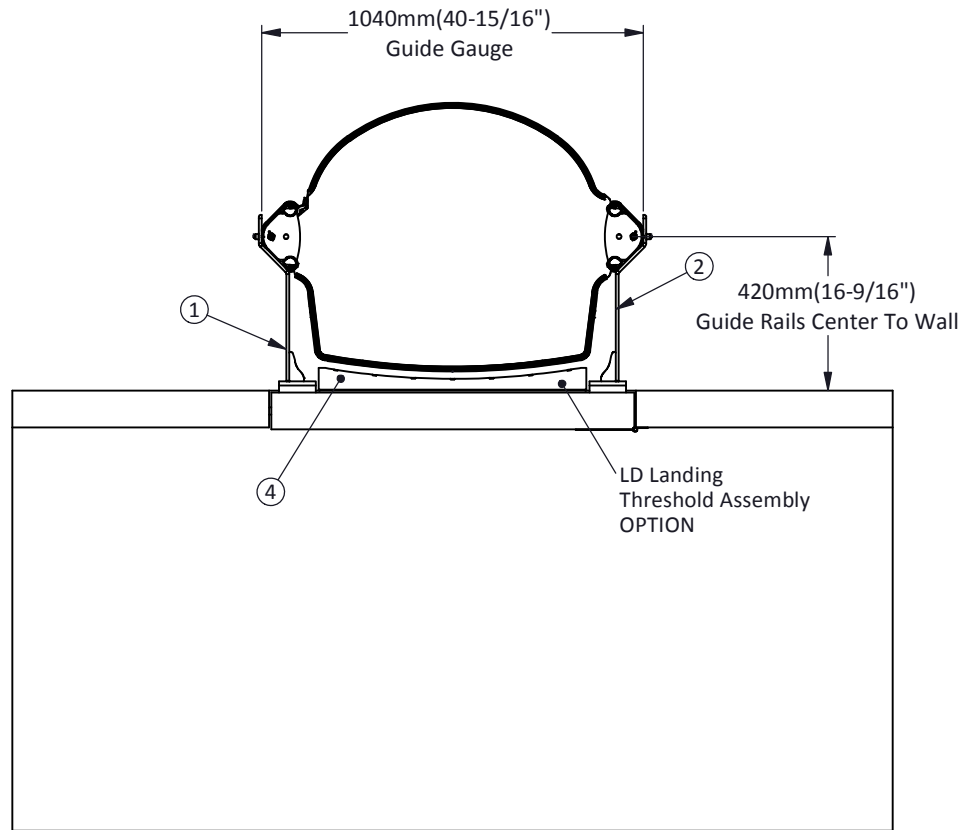


Item #	P/N	Description
	55102-00045	LD Universal Guide Rail Bracket Assembly
	55102-00044	Guide Mount Block (7038) With Fastener Kit




Item #	P/N	Description
1	55102-00072	LD Void Bracket LH Assembly
2	55102-00073	LD Void Bracket RH Assembly
3	28103-40009	Guide Mount Block (7038)
4	53102-00240	LD Landing Threshold Assembly

VOID LANDING APPLICATION WITH VOID BRACKETS



The information contained herein is the exclusive property of Stiltz Ltd. and shall not be distributed, reproduced, or disclosed in whole or in part without prior written permission of Stiltz Ltd.

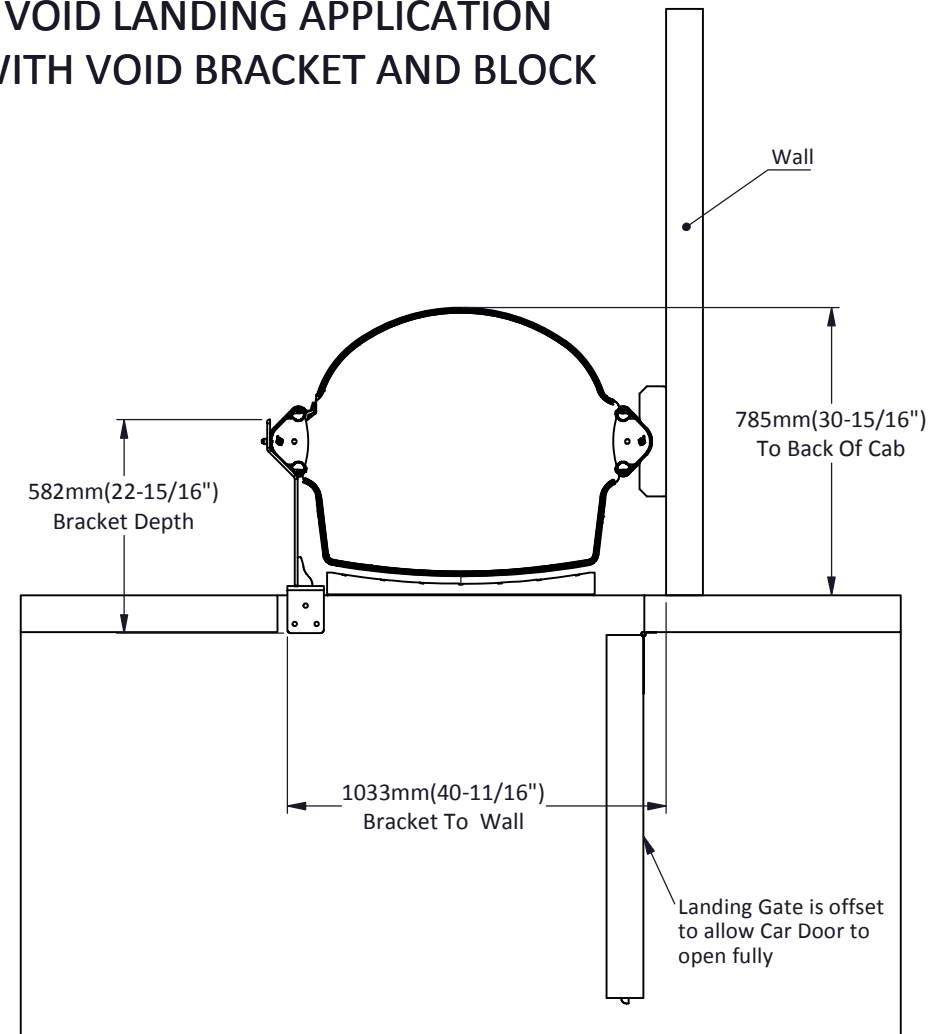
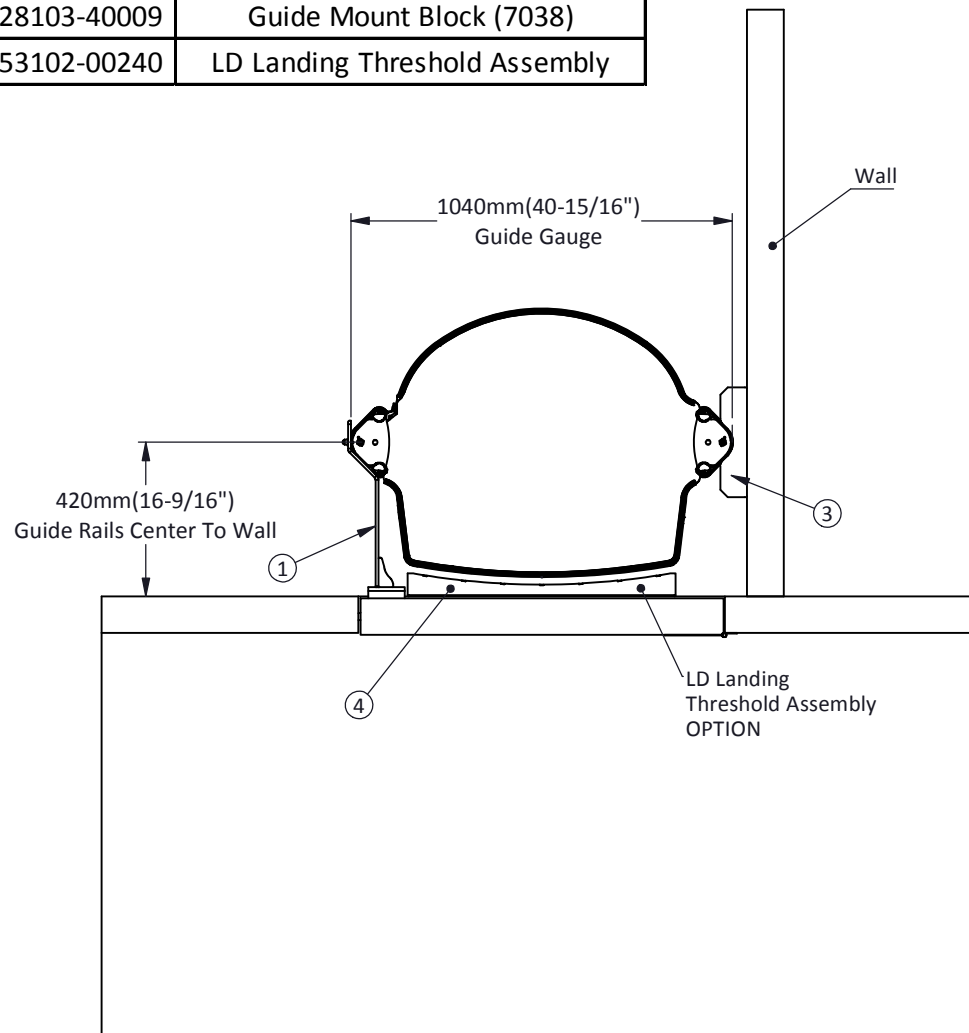


© Stiltz Ltd. 2013		TITLE Duo Straight Arm Void Bracket	
Drawn Susan Dong	Date 2020/8/5	A4	PAGE
 THIRD ANGLE PROJECTION - AS 1100			9 OF 17
DIMENSIONS IN MM UNLESS OTHERWISE NOTED		Dwg No. -	SCALE: 1:20

Dwg No -
SCALE: 1:20

Item #	P/N	Description
1	55102-00072	LD Void Bracket LH Assembly
2	55102-00073	LD Void Bracket RH Assembly
3	28103-40009	Guide Mount Block (7038)
4	53102-00240	LD Landing Threshold Assembly

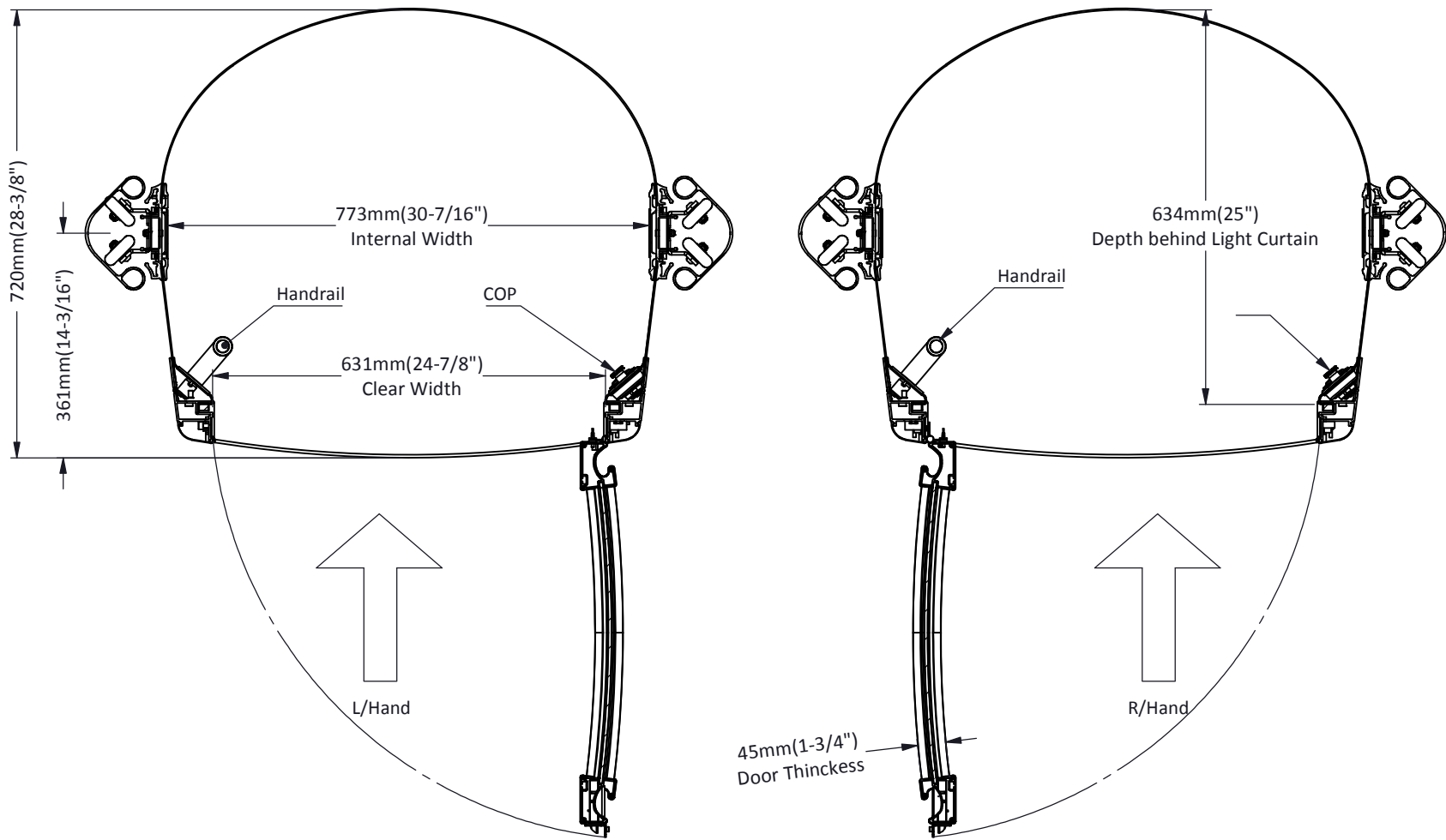
VOID LANDING APPLICATION WITH VOID BRACKET AND BLOCK



The information contained herein is the exclusive property of Stiltz Ltd. and shall not be distributed, reproduced, or disclosed in whole or in part without prior written permission of Stiltz Ltd.



© Stiltz Ltd. 2013		TITLE Duo Straight Arm Void Bracket w/ Block	
Drawn Susan Dong	Date 2020/8/5		
 THIRD ANGLE PROJECTION - AS 1100		DIMENSIONS IN MM UNLESS OTHERWISE NOTED A4	Dwg No - SCALE: 1:20
		PAGE 10 OF 17	



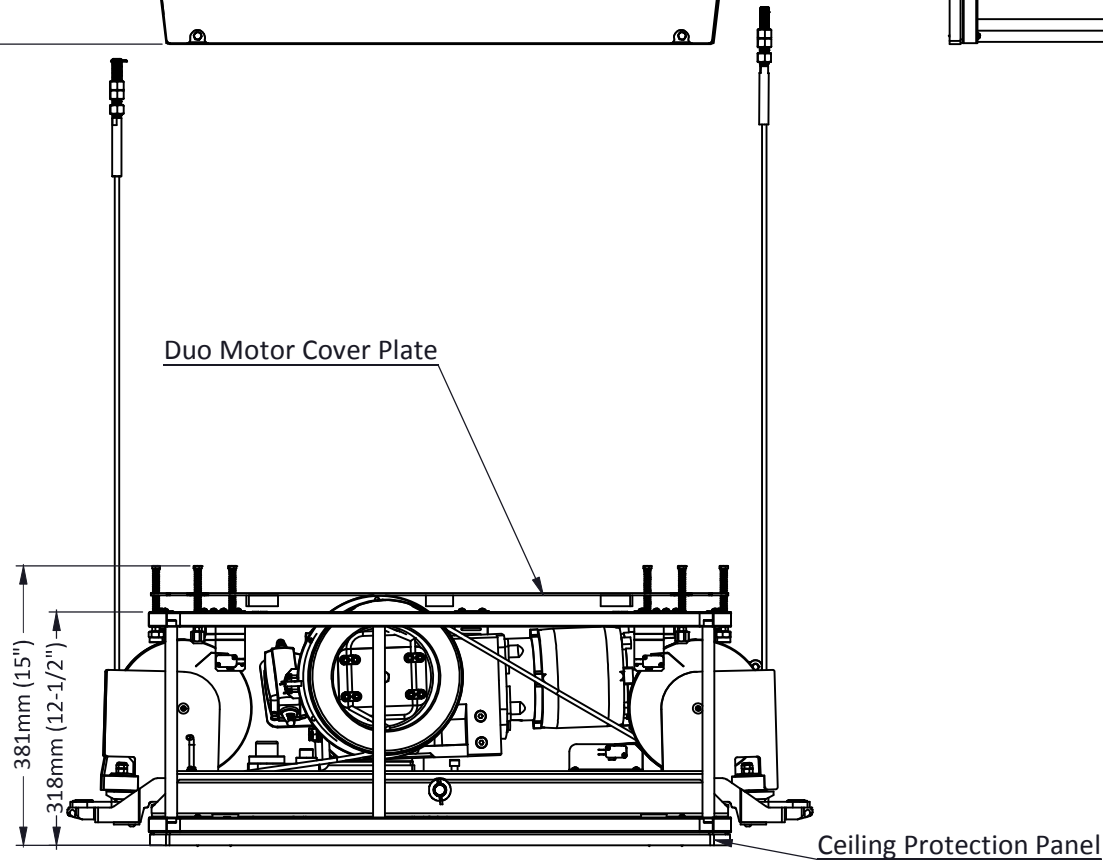
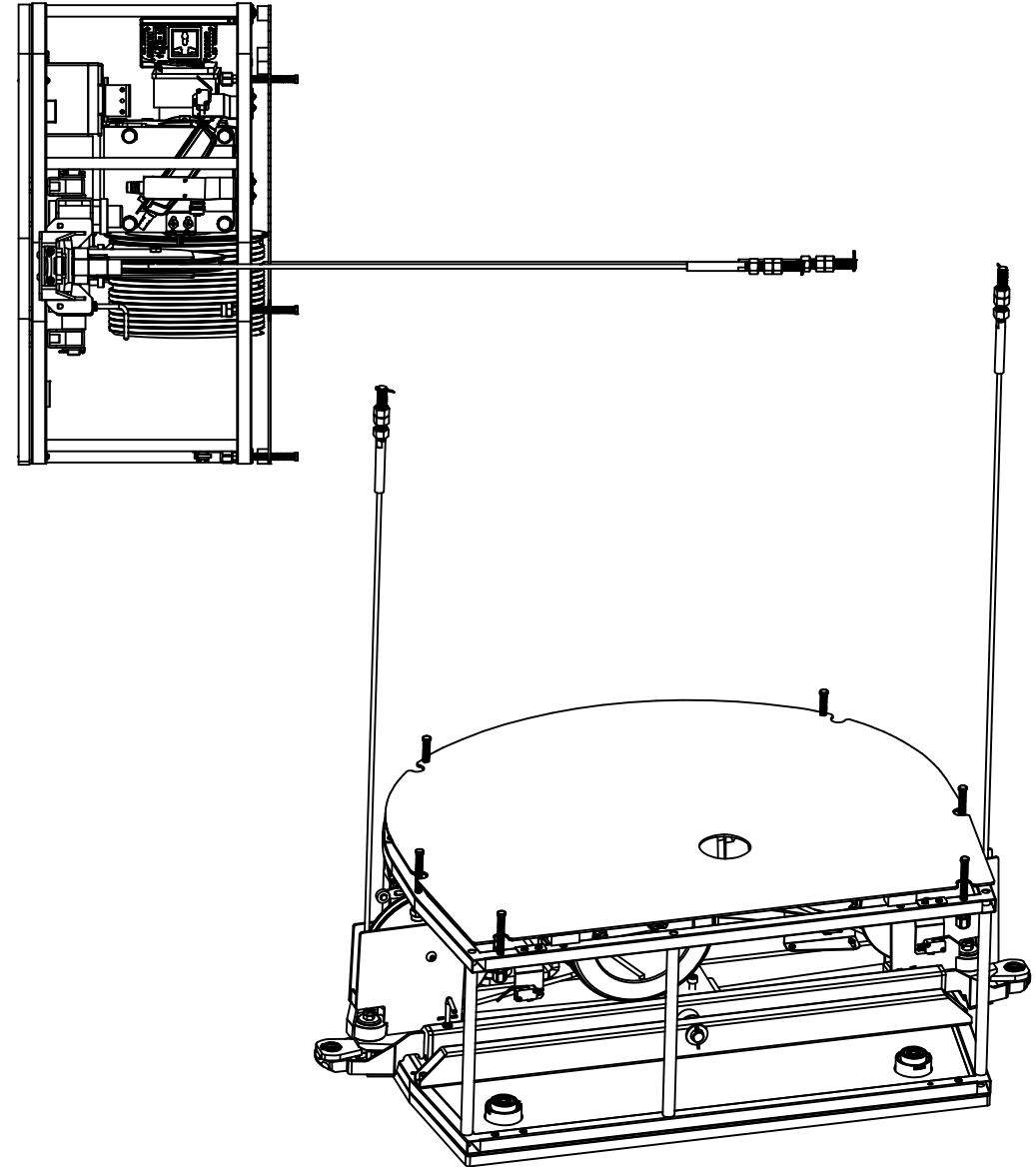
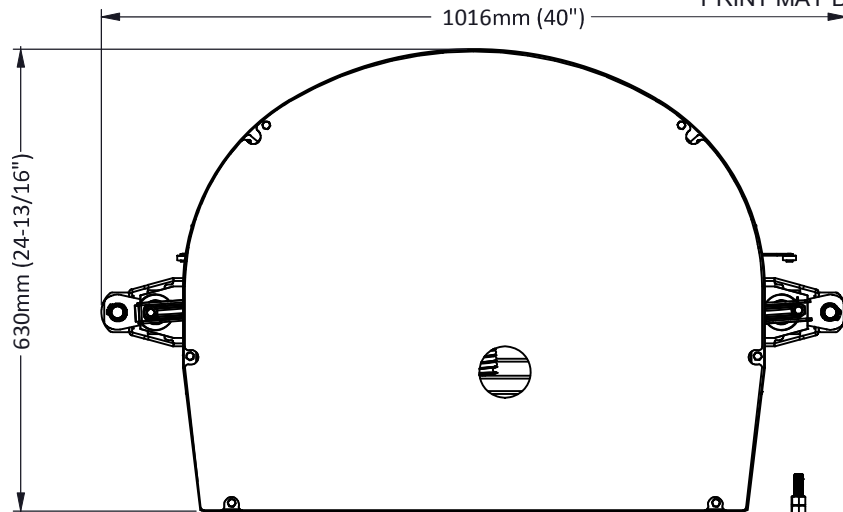
Duo Alta

The information contained herein is the exclusive property of Stiltz Ltd. and shall not be distributed, reproduced, or disclosed in whole or in part without prior written permission of Stiltz Ltd.



©		TITLE		
Drawn Wagon Wang		Date 2018/07/02		
 THIRD ANGLE PROJECTION - AS 1100		LD Duo Car Configuration		
		DIMENSIONS IN MM UNLESS OTHERWISE NOTED		
		A4	Dwg No CUSTOMER. 09	PAGE 11 OF 17
			SCALE:	

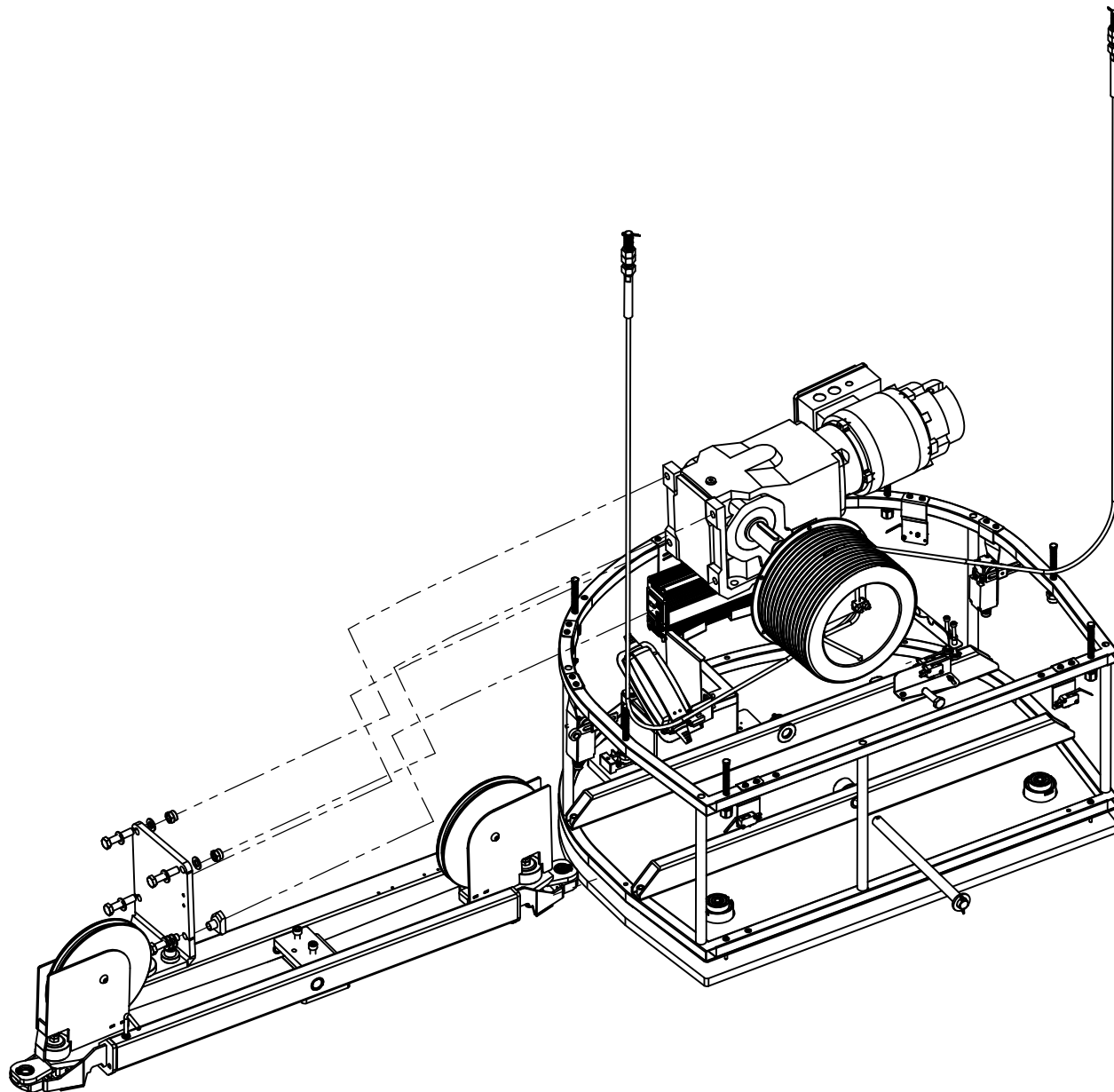
PRINT MAY BE REDUCED - DO NOT SCALE.

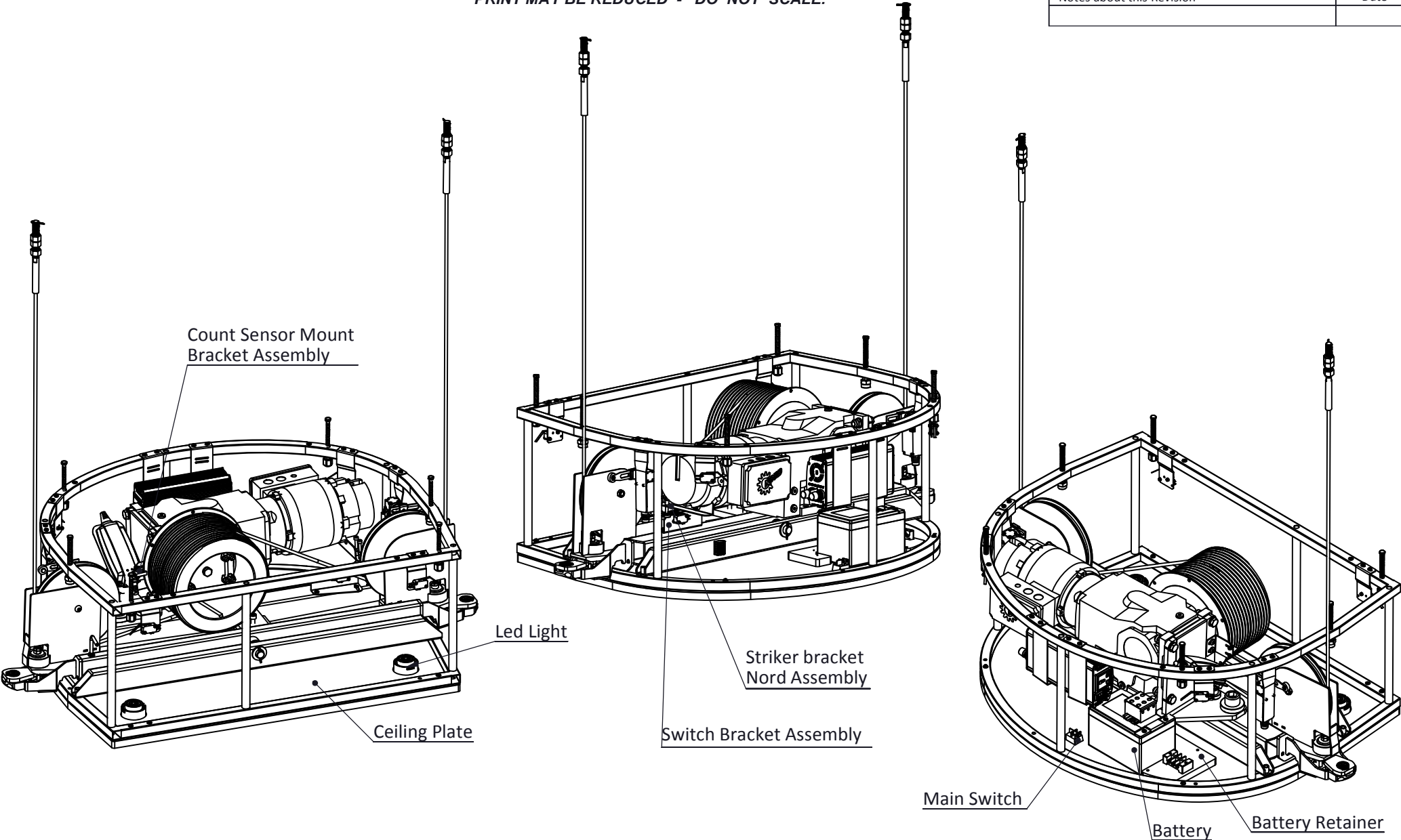


The information contained herein is the exclusive property of Stiltz Ltd. and shall not be distributed, reproduced, or disclosed in whole or in part without prior written permission of Stiltz Ltd.



©			TITLE		
Drawn Wagon Wang			Date 2018/07/02		
<div></div> <div>DIMENSIONS IN MM UNLESS OTHERWISE NOTED</div> <div>THIRD ANGLE PROJECTION - AS 1100</div>			A4	Dwg No CUSTOMER. 10	PAGE 12 OF 17
				SCALE:	





Duo Alta

The information contained herein is the exclusive property of Stiltz Ltd. and shall not be distributed, reproduced or disclosed in whole or in part without prior written permission of Stiltz Ltd.



Drawn Guangji Chen

Date 2018/07/02



DIMENSIONS IN MM UNLESS OTHERWISE NOTED

THIRD ANGLE PROJECTION - AS 1100

TITLE

Duo Hoist Rear View

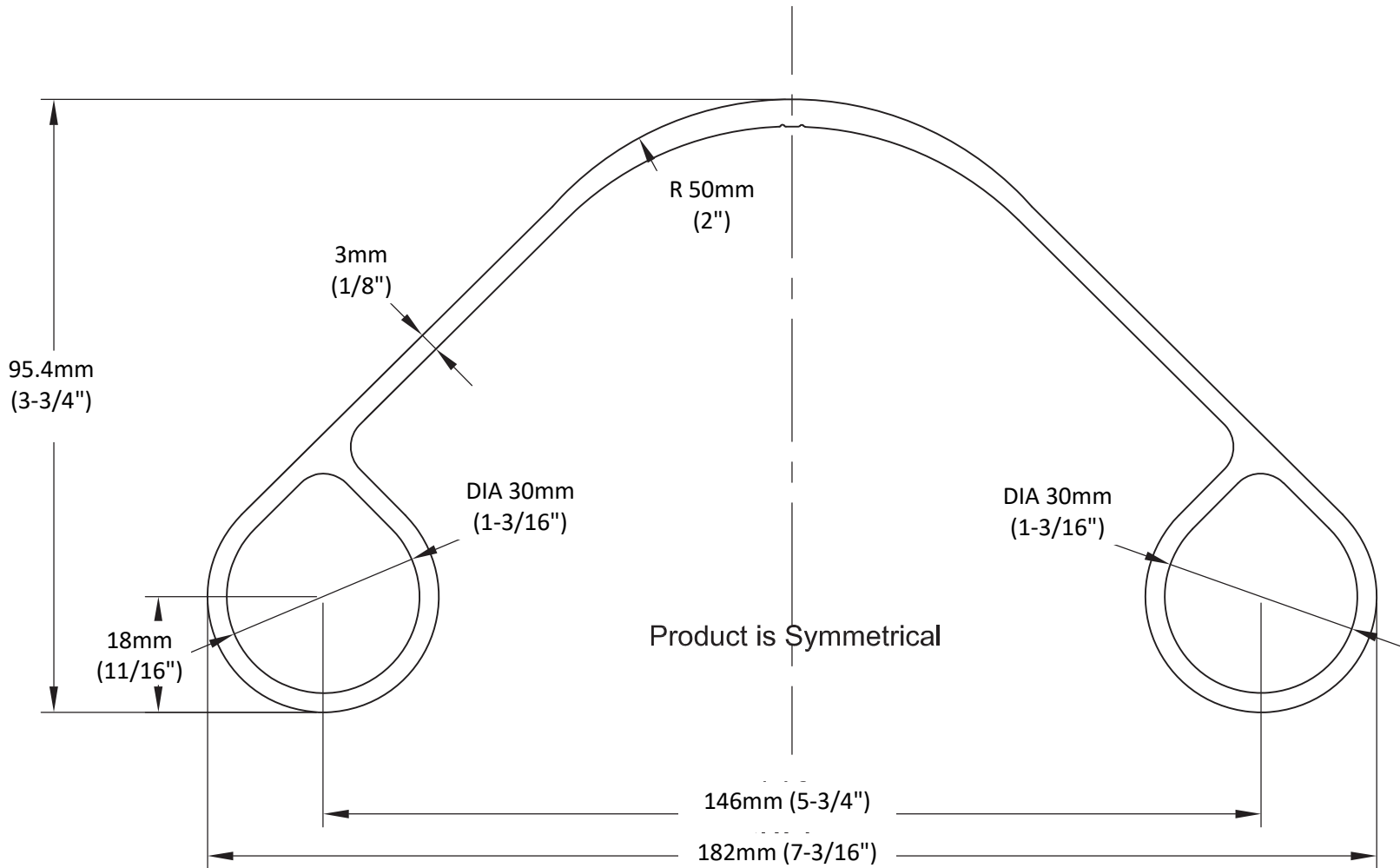
A4

Dwg No CUSTOMER. 12

SCALE: 1:10

PAGE

14 OF 17




Guide rail pieces are 2.3m (90-1/2") each

Material: Aluminium 6063-T5
Process: Aluminium Extrusion
Treatment: T5 Heat treatment and Powder coating



The information contained herein is the exclusive property of Stiltz Ltd. and shall not be distributed, reproduced, or disclosed in whole or in part without prior written permission of Stiltz Ltd.



©			TITLE		
Drawn Wagon Wang			Date 2018/07/02		
<div></div> <div>DIMENSIONS IN MM UNLESS OTHERWISE NOTED</div> <div>THIRD ANGLE PROJECTION - AS 1100</div>			A4	Dwg No CUSTOMER. 13	PAGE 15 OF 17
				SCALE:	

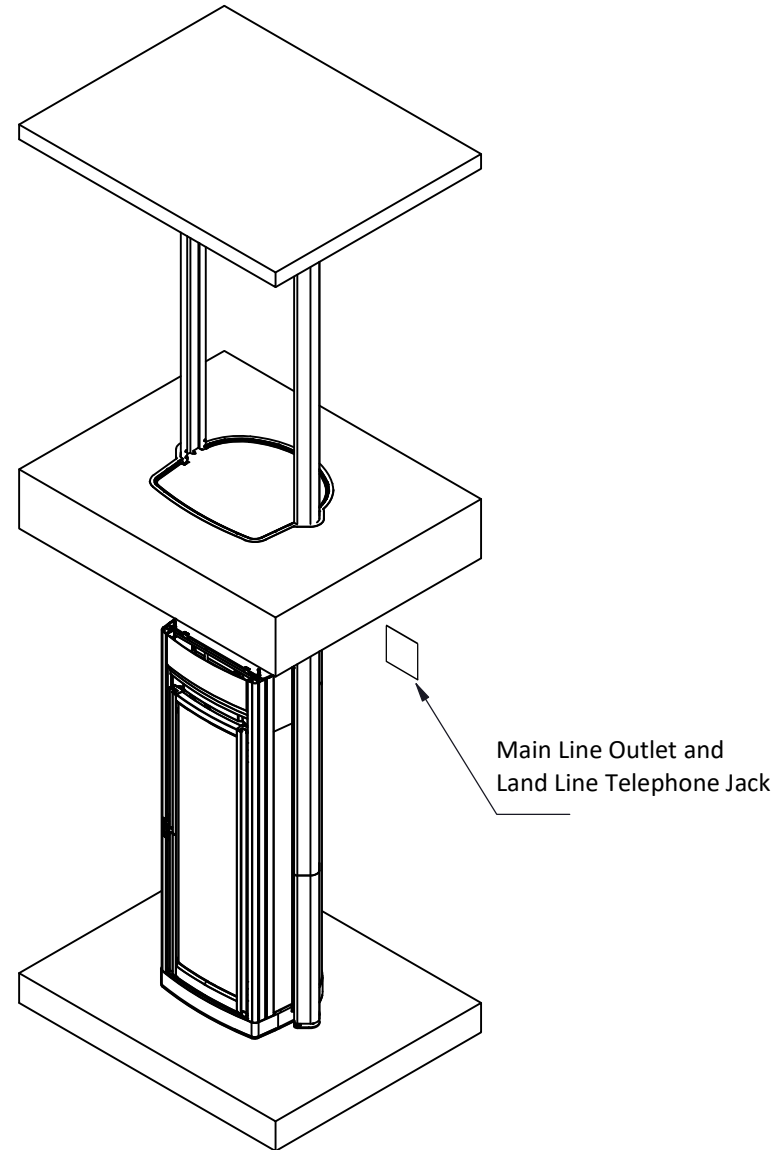
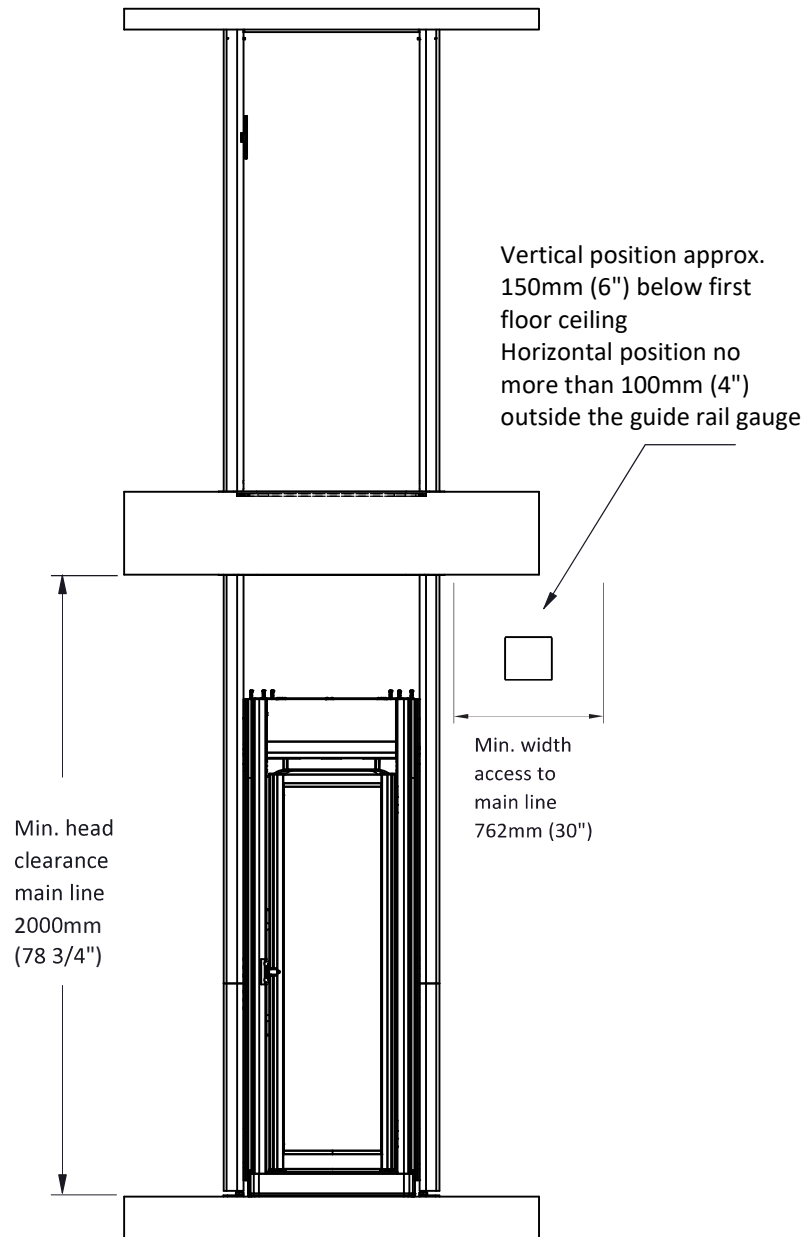
Electrical requirements for Stiltz Lifts

- The lifts are powered by a 220v motor.
- A dedicated 220v 15-20amp circuit is preferred for the equipment.
- Alternatively, a dedicated 110v 15amp circuit may be combined with a step-up transformer.
- The lift power supply lead must be plugged in to the power source **BELOW** the upstairs floor (if going through a floor) otherwise the power supply lead will prevent the floor lid from positioning correctly.



Step-up transformer dimension: 8" x 6" x 10"

Step-up transformer will run a little warm so you must allow a few inches around it so it does not overheat.



Outlet can be positioned near either left or right guide rail section

The single socket is 220v AC and can be sourced from the step-up transformer or a dedicated 220v line.
If using a 220v line the circuit breaker must be 2 pole that breaks both 110v phases.



The information contained herein is
the exclusive property of Stiltz Ltd.
and shall not be distributed, reproduced,
or disclosed in whole or in part without
prior written permission of Stiltz Ltd.



©		TITLE	
Drawn	Wagon Wang	Date	2018/07/02
THIRD ANGLE PROJECTION - AS 1100		LD Duo Electrical Position	
A4		Dwg No	CUSTOMER. 15
SCALE:		PAGE	
		17 OF 17	